

ONE BEDROOM WITH BALCONY

# PLIMSOLL BUILDING

HANDYSIDE STREET, N1C

Asking Price  
£735,000

**BERKSHIRE  
HATHAWAY**  
HOMESERVICES

LONDON

# PROPERTY DETAILS

<b>Guide Price</b> £735,000	<b>Square Footage</b> 532
<b>Council Tax Band</b> F	<b>EPC</b> B
<b>Ground Rent</b> £500	<b>Service Charge</b> £3230
<b>Tenure</b> Leasehold	

A spacious one bedroom apartment with balcony in one of King's Cross' most popular developments, the Plimsoll Building.

Overlooking the charming communal gardens, this is arguably one of the best one bedroom options in the building.

Residents benefit from a 24-hour concierge service, private dining space and lounge, a well-equipped fitness suite, beautiful courtyard garden, and are moments from all vibrant King's Cross has to offer.

\*\*\*Virtual Staging Used.

## FEATURES

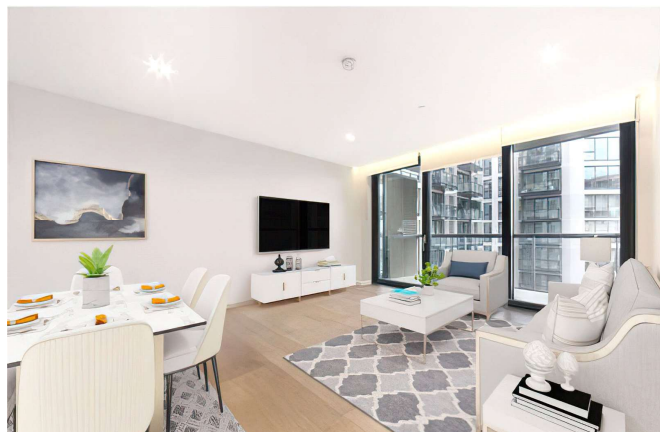
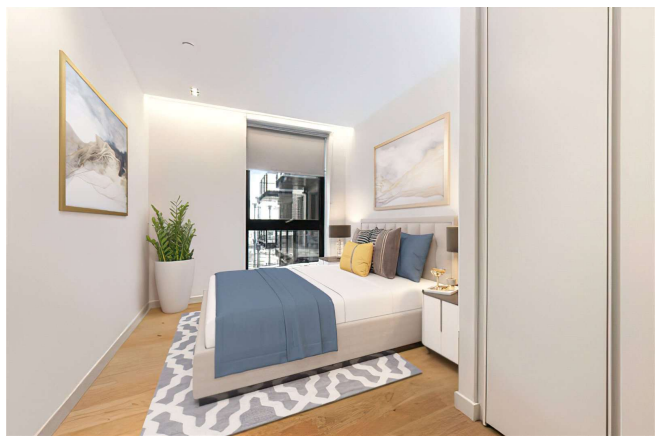
- One Bedroom
- One Reception Room
- One Bathroom
- Concierge/ Porter
- 24 Hour Security
- Lift
- Roof Terrace
- Communal Gardens

## LOCATION



**KINGS CROSS SALES**  
Unit 4,6 Pancras Square, N1C 4AG

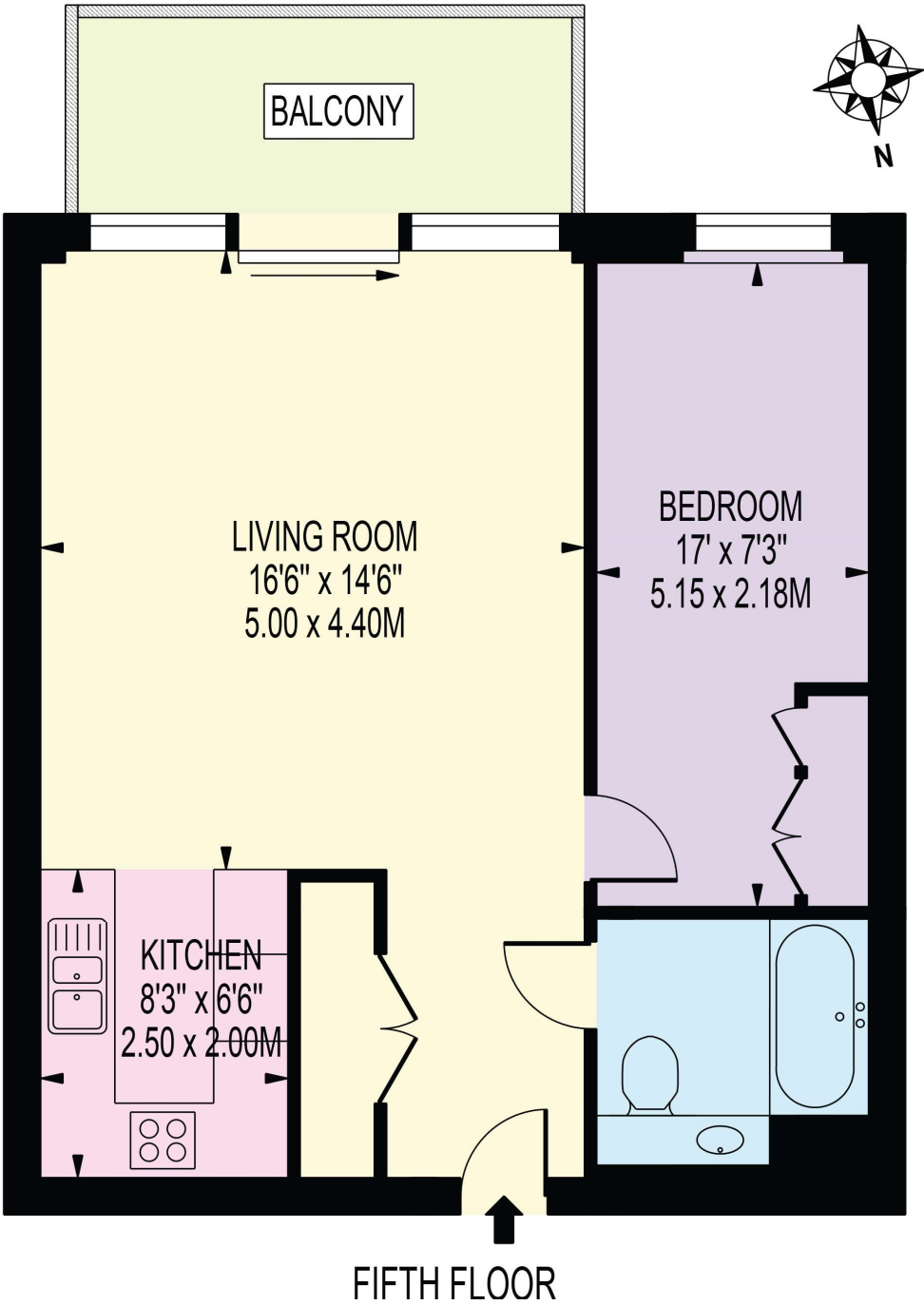
020 7467 2020  
sales.kingscross@bhhs-london.com



# FLOORPLAN

## PLIMSOLL BUILDING

APPROXIMATE GROSS INTERNAL FLOOR AREA: 532 SQ FT - 49.44 SQ M



FOR ILLUSTRATION PURPOSES ONLY

THIS FLOOR PLAN SHOULD BE USED AS A GENERAL OUTLINE FOR GUIDANCE ONLY AND DOES NOT CONSTITUTE IN WHOLE OR IN PART AN OFFER OR CONTRACT.  
ANY INTENDING PURCHASER OR LESSEE SHOULD SATISFY THEMSELVES BY INSPECTION, SEARCHES, ENQUIRIES AND FULL SURVEY AS TO THE CORRECTNESS OF EACH STATEMENT.  
ANY AREAS, MEASUREMENTS OR DISTANCES QUOTED ARE APPROXIMATE AND SHOULD NOT BE USED TO VALUE A PROPERTY OR BE THE BASIS OF ANY SALE OR LET.