



One Bedroom with Balcony in Prime Plimsoll Building

PLIMSOLL BUILDING

1 HANDYSIDE STREET, N1C

Asking Price
£735,000

**BERKSHIRE
HATHAWAY**
HOMESERVICES

LONDON

PROPERTY DETAILS

Guide Price £735,000	Square Footage 568
Council Tax Band F	EPC B
Ground Rent £500 pa	Service Charge £6245 pa
Tenure Leasehold	

A spacious one bedroom apartment with balcony and garden views on the eighth floor of one of King's Cross' most popular developments, the Plimsoll Building.

Residents benefit from 24-hour concierge service, private dining space and lounge, a well-equipped fitness suite, beautiful courtyard garden, roof terrace, and are moments from all vibrant King's Cross has to offer.

FEATURES

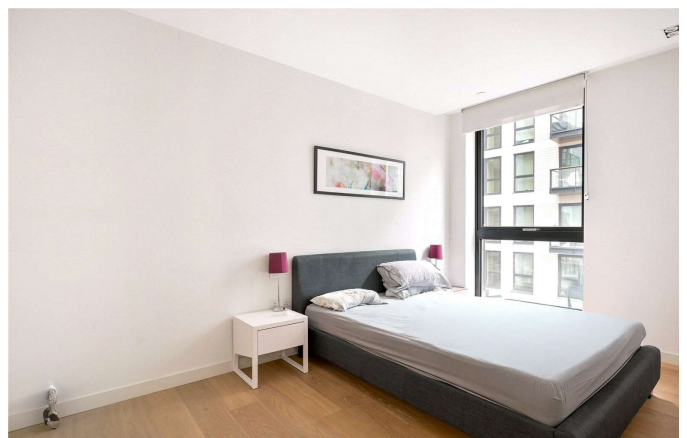
- One Bedroom
- One Reception Room
- One Bathroom
- Concierge/Porter
- Upper Floor
- Lift
- Roof Terrace
- Balcony

LOCATION



KINGS CROSS SALES
Unit 4,6 Pancras Square, N1C 4AG

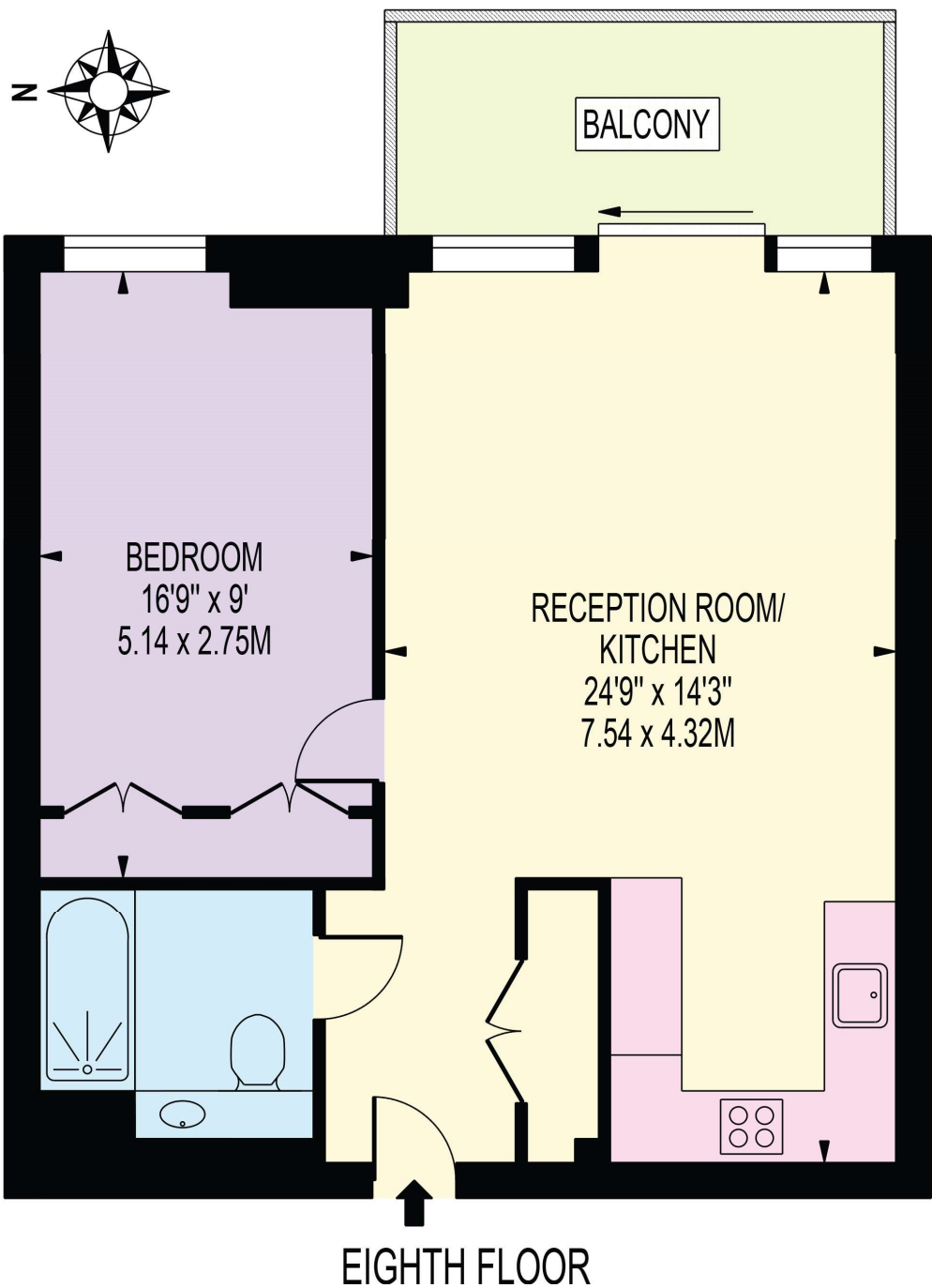
020 7467 2020
sales.kingscross@bhhs-london.com



FLOORPLAN

PLIMSOLL BUILDING

APPROXIMATE GROSS INTERNAL FLOOR AREA: 568 SQ FT - 52.75 SQ M



FOR ILLUSTRATION PURPOSES ONLY

THIS FLOOR PLAN SHOULD BE USED AS A GENERAL OUTLINE FOR GUIDANCE ONLY AND DOES NOT CONSTITUTE IN WHOLE OR IN PART AN OFFER OR CONTRACT. ANY INTENDING PURCHASER OR LESSEE SHOULD SATISFY THEMSELVES BY INSPECTION, SEARCHES, ENQUIRIES AND FULL SURVEY AS TO THE CORRECTNESS OF EACH STATEMENT. ANY AREAS, MEASUREMENTS OR DISTANCES QUOTED ARE APPROXIMATE AND SHOULD NOT BE USED TO VALUE A PROPERTY OR BE THE BASIS OF ANY SALE OR LET.