



Two Bedroom with Parking in Prime King's Cross

# TAPESTRY APARTMENTS

1 CANAL REACH, N1C

Asking Price  
£1,550,000

**BERKSHIRE  
HATHAWAY**  
HOMESERVICES

LONDON

# PROPERTY DETAILS

<b>Guide Price</b> £1,550,000	<b>Square Footage</b> 1083
<b>Council Tax Band</b> F	<b>EPC</b> B
<b>Ground Rent</b> £650 pa	<b>Service Charge</b> £11217 pa
<b>Tenure</b> Leasehold	

A stunning two bedroom with balcony in the multi-award-winning Tapestry Apartments.

Located on the twelfth floor, the property benefits from fabulous views and over 1000 square feet of accommodation.

Residents at Tapestry Apartments also have full advantage of amenities such as 24-hour concierge service, gym, communal roof garden, dining and entertainment suite, and residents' lounge.

A secure private parking space is also included in the sale.

Nearby transport links include St. Pancras International and King's Cross Station (Northern, Victoria, Hammersmith & City, Metropolitan, Circle and Piccadilly lines, National Rail) providing frequent services into the city and the West End.

Vibrant Coal Drops Yard and Granary Square are also moments away with their array of boutiques, bars, restaurants, and cultural offerings.

# FEATURES

- Two Bedrooms
- One Reception Room
- Two Bathrooms
- Private Parking
- Lift
- Upper Floor
- Balcony, Communal Gardens
- Concierge/Porter

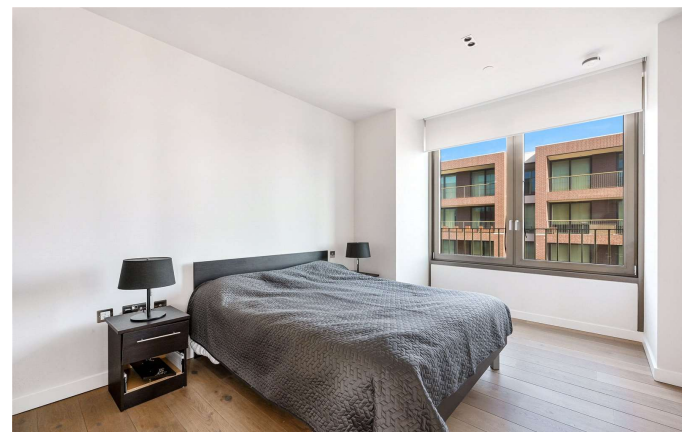
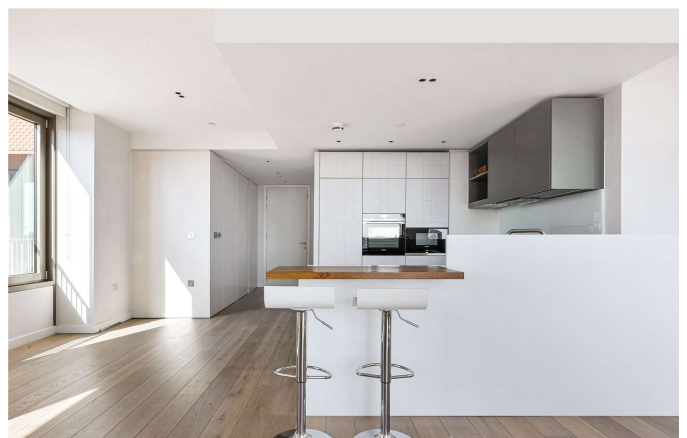
# LOCATION



**KINGS CROSS SALES**  
Unit 4,6 Pancras Square, N1C 4AG

020 7467 2020  
sales.kingscross@bhhs-london.com

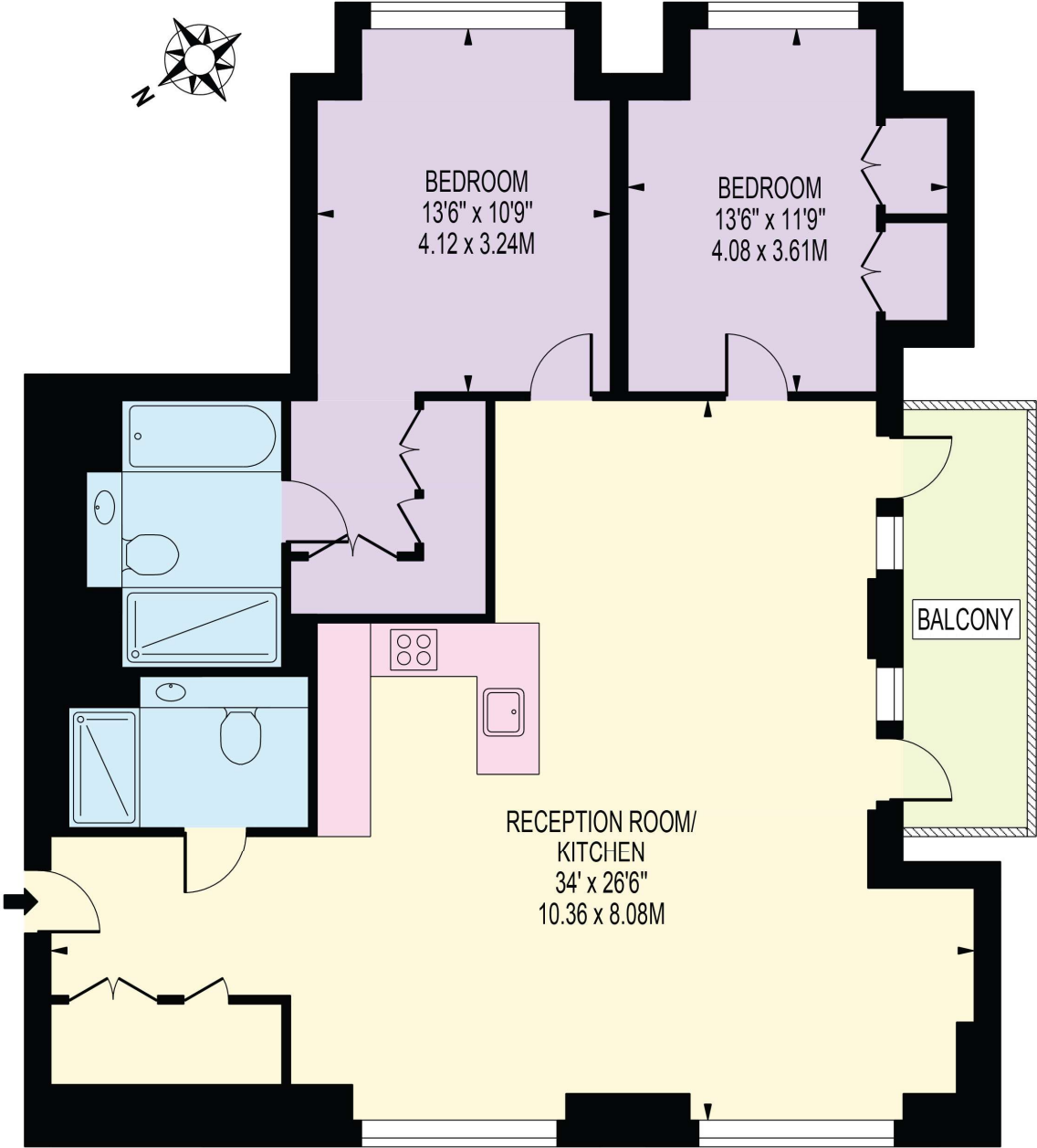




# FLOORPLAN

## TAPESTRY APARTMENTS

APPROXIMATE GROSS INTERNAL FLOOR AREA: 1083 SQ FT - 100.58 SQ M



### TWELFTH FLOOR

FOR ILLUSTRATION PURPOSES ONLY

THIS FLOOR PLAN SHOULD BE USED AS A GENERAL OUTLINE FOR GUIDANCE ONLY AND DOES NOT CONSTITUTE IN WHOLE OR IN PART AN OFFER OR CONTRACT. ANY INTENDING PURCHASER OR LESSEE SHOULD SATISFY THEMSELVES BY INSPECTION, SEARCHES, ENQUIRIES AND FULL SURVEY AS TO THE CORRECTNESS OF EACH STATEMENT. ANY AREAS, MEASUREMENTS OR DISTANCES QUOTED ARE APPROXIMATE AND SHOULD NOT BE USED TO VALUE A PROPERTY OR BE THE BASIS OF ANY SALE OR LET.