



An Exceptional Family Home Refurbished to the
Highest Standard in the Heart of Marylebone

BINGHAM PLACE

MARYLEBONE, W1U

£7,000 per week

**BERKSHIRE
HATHAWAY**
HOMESERVICES

LONDON

PROPERTY DETAILS

Guide Price
£7,000 per week

Square Footage
3004

Council Tax Band
H

EPC Rating
B

An exceptional three-bedroom family home located on a quiet street behind the fashionable Marylebone High Street.

The property benefits from a large dining kitchen with a patio area, games room (second reception room or optional guest bedroom) with shower room, main reception room with exposed brickwork feature walls and wood flooring, a master bedroom with terrace, a walk in wardrobe and en-suite shower room, a further double bedroom, family bathroom and a third double bedroom with en-suite shower room.

This family home has been interior designed to the highest specification with intricate lighting features, and wood flooring in the majority of rooms.

It is ideally located moments from Baker Street Underground Station and the open spaces of Regents Park.

FEATURES

Three Bedrooms

Two Reception Rooms

Four Bathrooms

House

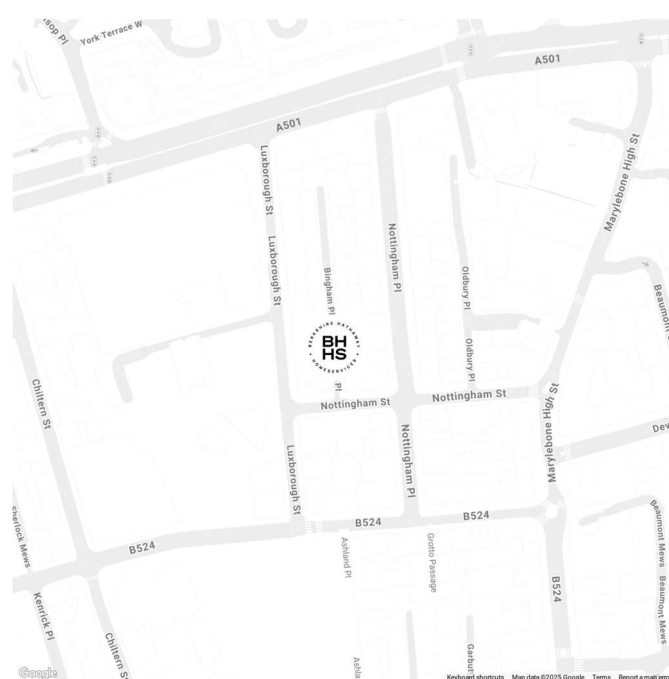
Mews

Patio

Roof Terrace

Period

LOCATION



MARYLEBONE LETTINGS

20A Paddington Street, W1U 5QP

020 7486 6338

lettings.marylebone@bhhs-london.com

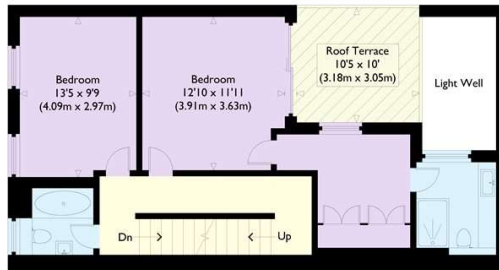


FLOORPLAN

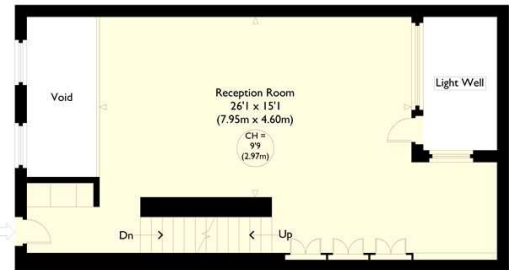
Bingham Place



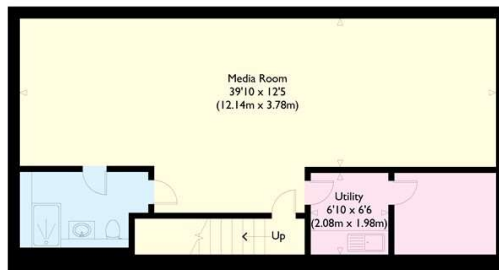
Second Floor



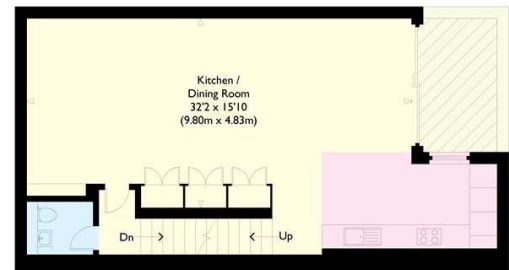
First Floor



Ground Floor



Basement



Lower Ground Floor

Approximate Gross Internal Floor Area : 3004 sq ft / 279.1 sq m (Excluding Void)
Illustration for identification purposes only, measurements are approximate, not to scale.