



WESTBOURNE CRESCENT

BAYSWATER, W2

Beautiful Short Let Apartment Arranged Over Two Floors Close
to Hyde Park

£2,307 Per Week

£9,997 pcm

WESTBOURNE CRESCENT

BAYSWATER, W2

This beautiful two-bedroom apartment offers a sophisticated and comfortable living space spread across the ground and lower ground floor of an elegant period building. With two modern ensuite bathrooms and separate W.C, a charming patio garden, and convenient access to transport links such as Lancaster Gate and Paddington Station, this apartment is an ideal choice for those seeking a luxurious and well-connected short term rental in London.

Available fully furnished and from the 16th of June for three months.

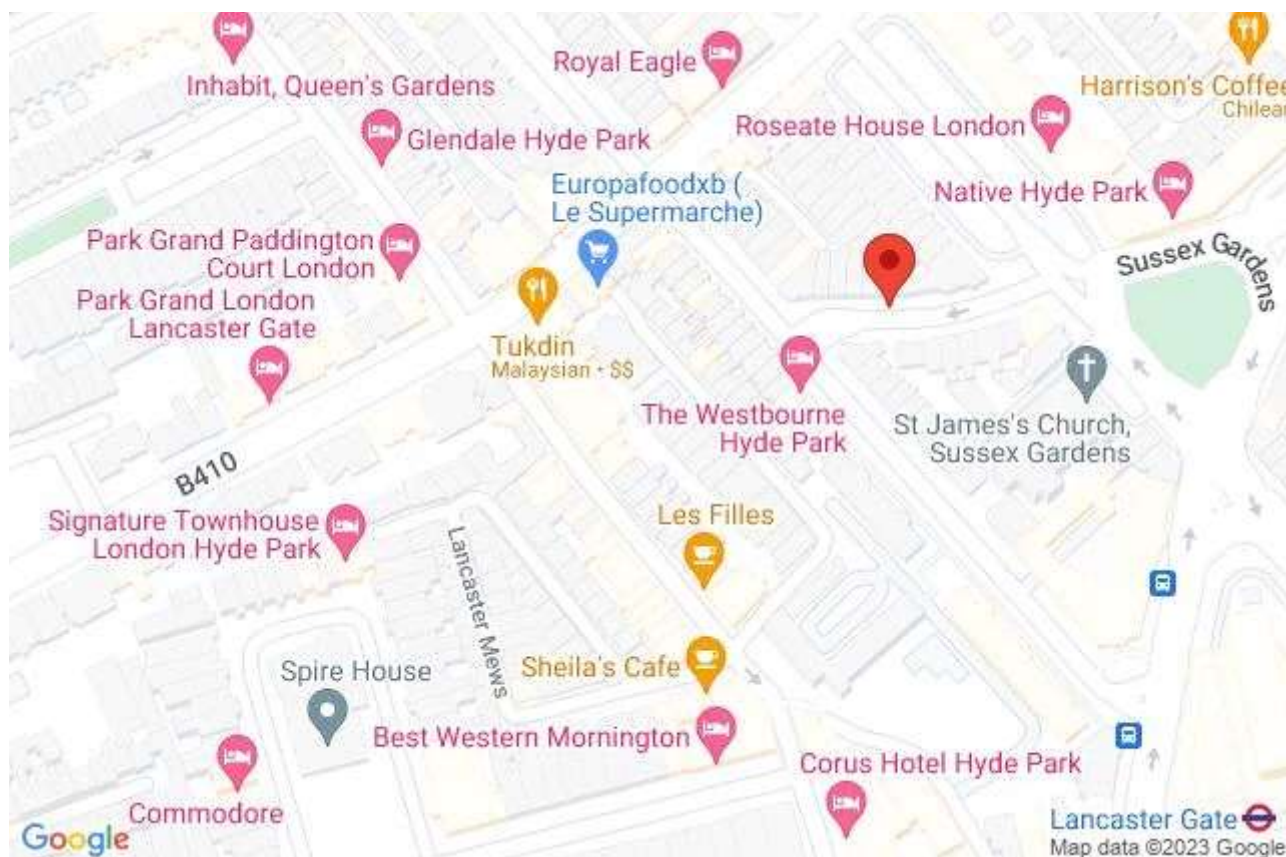
- Short Let
- Two Bedrooms
- One Reception Room
- Three Bathrooms
- Apartment
- Basement
- Ground Floor
- Private Courtyard
- Garden
- Modern
- Period
- 1351 Sq Ft Approximately

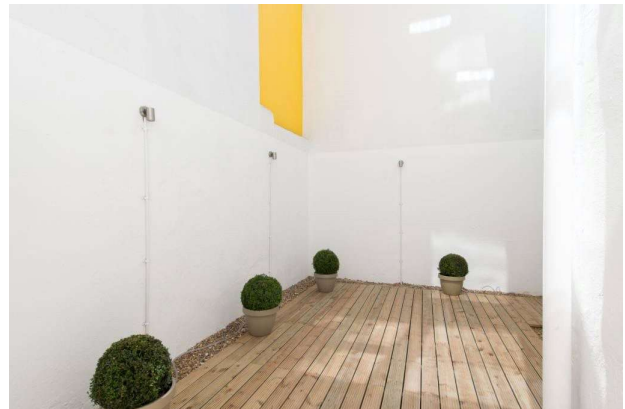
COUNCIL TAX BAND:

To be confirmed

EPC RATING:

C





**Hyde Park & Bayswater
Lettings**
24-25 Albion Street

020 7262 2030
lettings.hydepark@bhhs-london.com
BHHSLondon.com

**BERKSHIRE
HATHAWAY**
HOMESERVICES

LONDON

Consumer Protection from Unfair Trading Regulations 2008. These details are for guidance only and complete accuracy cannot be guaranteed. If there is any point, which is of particular importance, verification should be obtained. They do not constitute a contract or part of a contract. All measurements are approximate. No guarantee can be given with regard to planning permissions or fitness for purpose. No apparatus, equipment, fixture or fitting has been tested. Items shown in photographs are NOT