



Bright and Spacious One Bedroom Apartment in  
The Water Gardens

# NORFOLK CRESCENT

HYDE PARK, W2

£500 per week

**BERKSHIRE  
HATHAWAY**  
HOMESERVICES

LONDON

# PROPERTY DETAILS

<b>Guide Price</b> £500 per week	<b>Square Footage</b> 520
<b>Council Tax Band</b> E	<b>EPC Rating</b> D

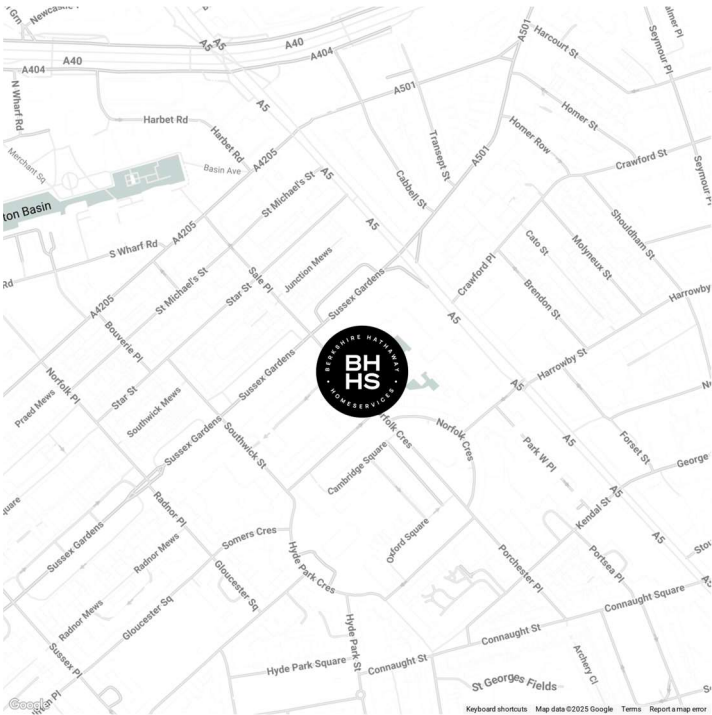
The Water Gardens was built between 1961 and 1966 as a singular part of a wider development by the Church Commissioners. Its Modernist architecture stands out amongst its heritage backdrop of Bayswater and Marylebone. The stunning centre courtyard, beautifully landscaped with mature trees and unsurprisingly water. Originally designed to create white noise, the water features still serve that purpose today.

The apartment is situated on the seventh floor, with lift and offers a light filled reception space with room for dining, separate kitchen, bathroom, and a large double bedroom, with ample built-in storage.

## FEATURES

- One Bedroom
- One Reception Room
- One Bathroom
- Concierge/Porter
- Upper Floor
- Communal Gardens

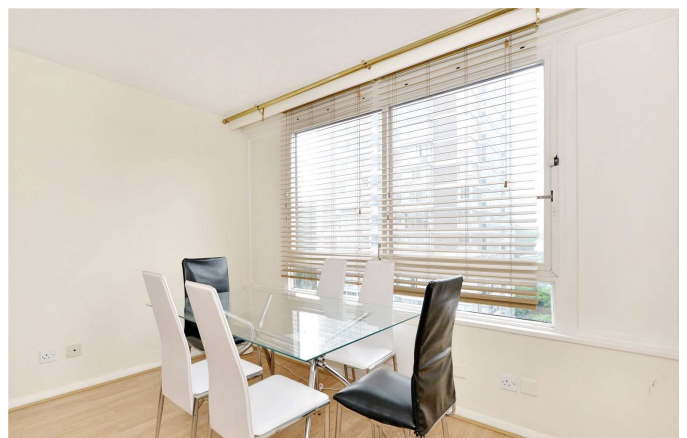
## LOCATION



**HYDE PARK LETTINGS**  
24-25 Albion Street, W2 2AX

020 7262 2030  
lettings.hydepark@bhhs-london.com

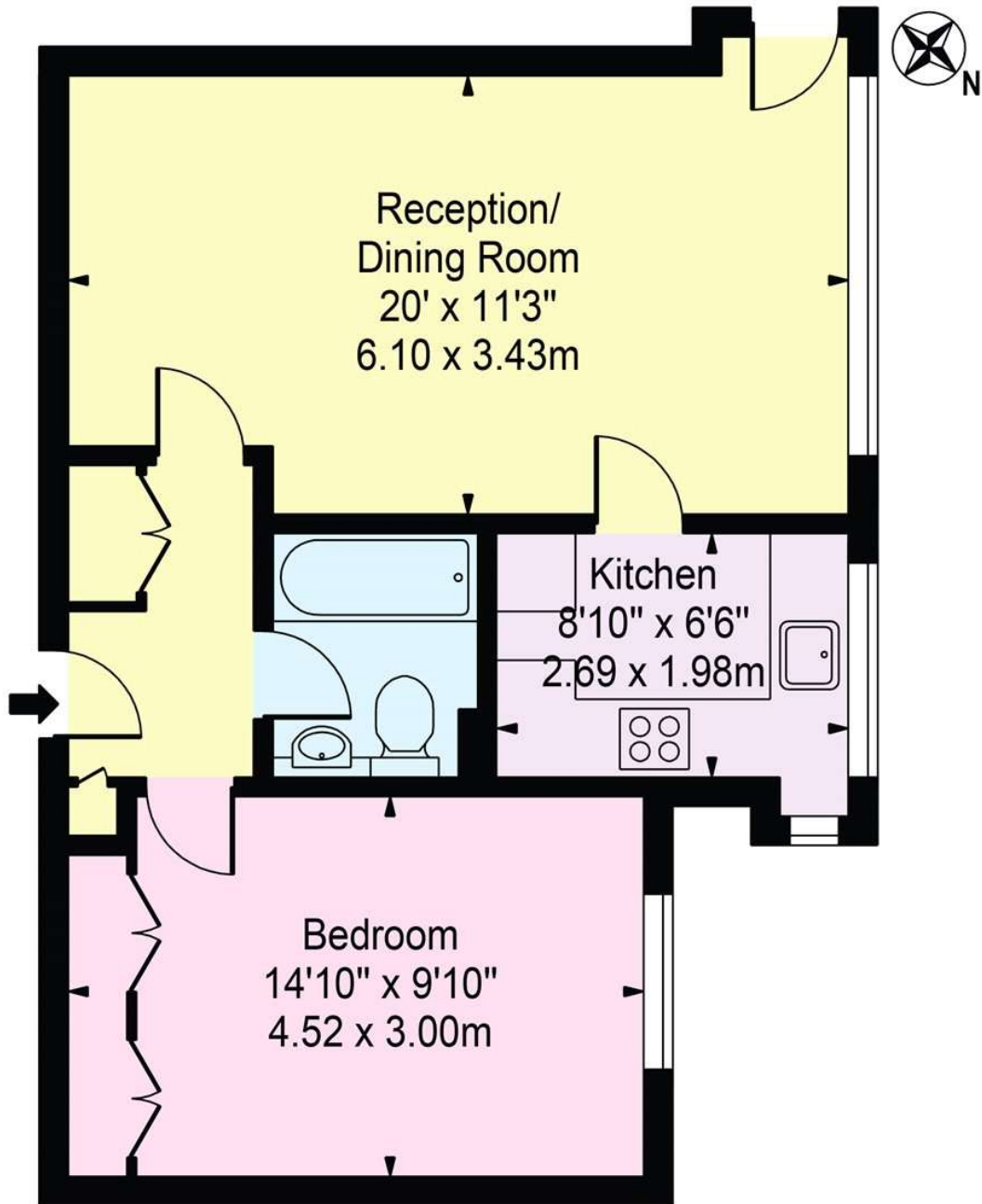




# FLOORPLAN

## The Water Gardens

Approx. Gross Internal Area 520 Sq Ft - 48.31 Sq M



### Seventh Floor

For Illustration Purposes Only - Not To Scale

This floor plan should be used as a general outline for guidance only and does not constitute in whole or in part an offer or contract. Any intending purchaser or lessee should satisfy themselves by inspection, searches, enquiries and full survey as to the correctness of each statement. Any areas, measurements or distances quoted are approximate and should not be used to value a property or be the basis of any sale or let.