



A Studio Apartment Near Hyde Park

Park West Place

Hyde Park Estate, W2

Offers Over
£275,000

**BERKSHIRE
HATHAWAY**
HOMESERVICES

LONDON

PROPERTY DETAILS

Guide Price £275,000	Square Footage 270
Council Tax Band C	EPC D
Ground Rent 50 pa	Service Charge 3000 pa
Tenure Leasehold	

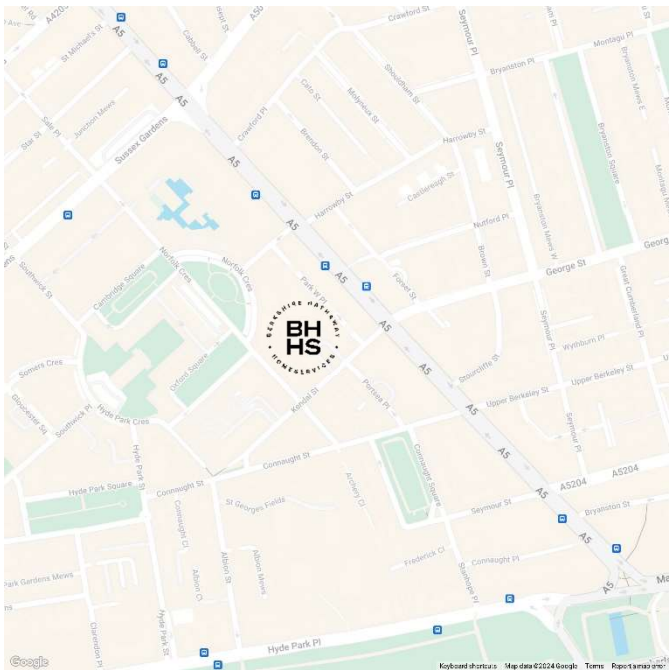
A lovely studio apartment conveniently located moments away from Marble Arch Underground Station. The property benefits from a bright living space, kitchen and modern bathroom. The property would make an ideal Central London base or buy-to-let investment and can be found within walking distance from the world famous shopping district of Oxford Street.

Park West is perfectly located in amongst the myriad boutique shops, restaurants and cafes of Connaught Village which is a convenient walk away from the wide open spaces of Hyde Park and the transport facilities of Paddington Station and Marble Arch.

FEATURES

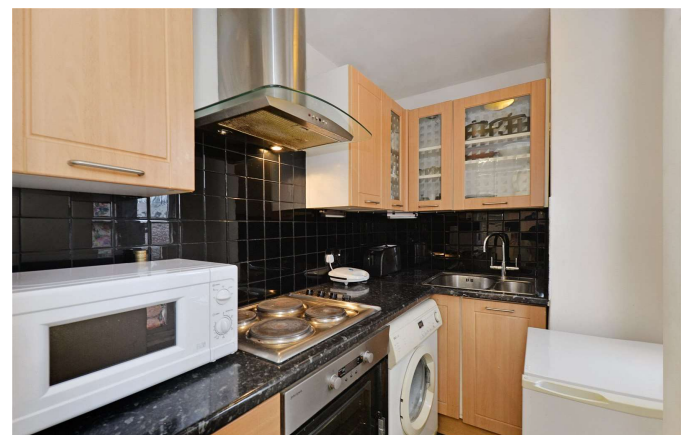
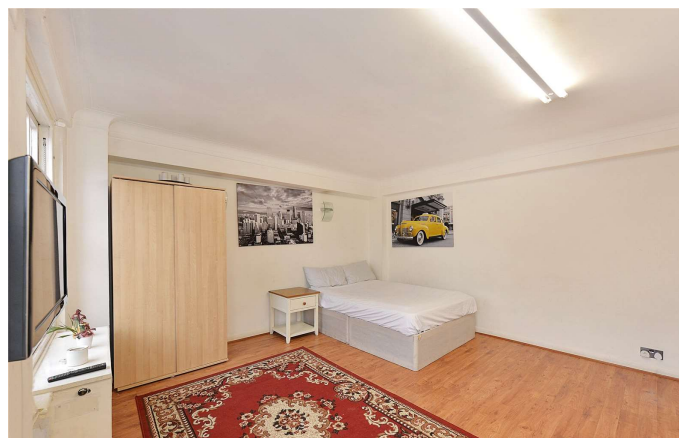
- Studio Apartment
- One Reception
- One Bathrooms
- Residents Parking
- Upper Floor
- Porter

LOCATION



HYDE PARK SALES
24-25 Albion Street, W2 2AX

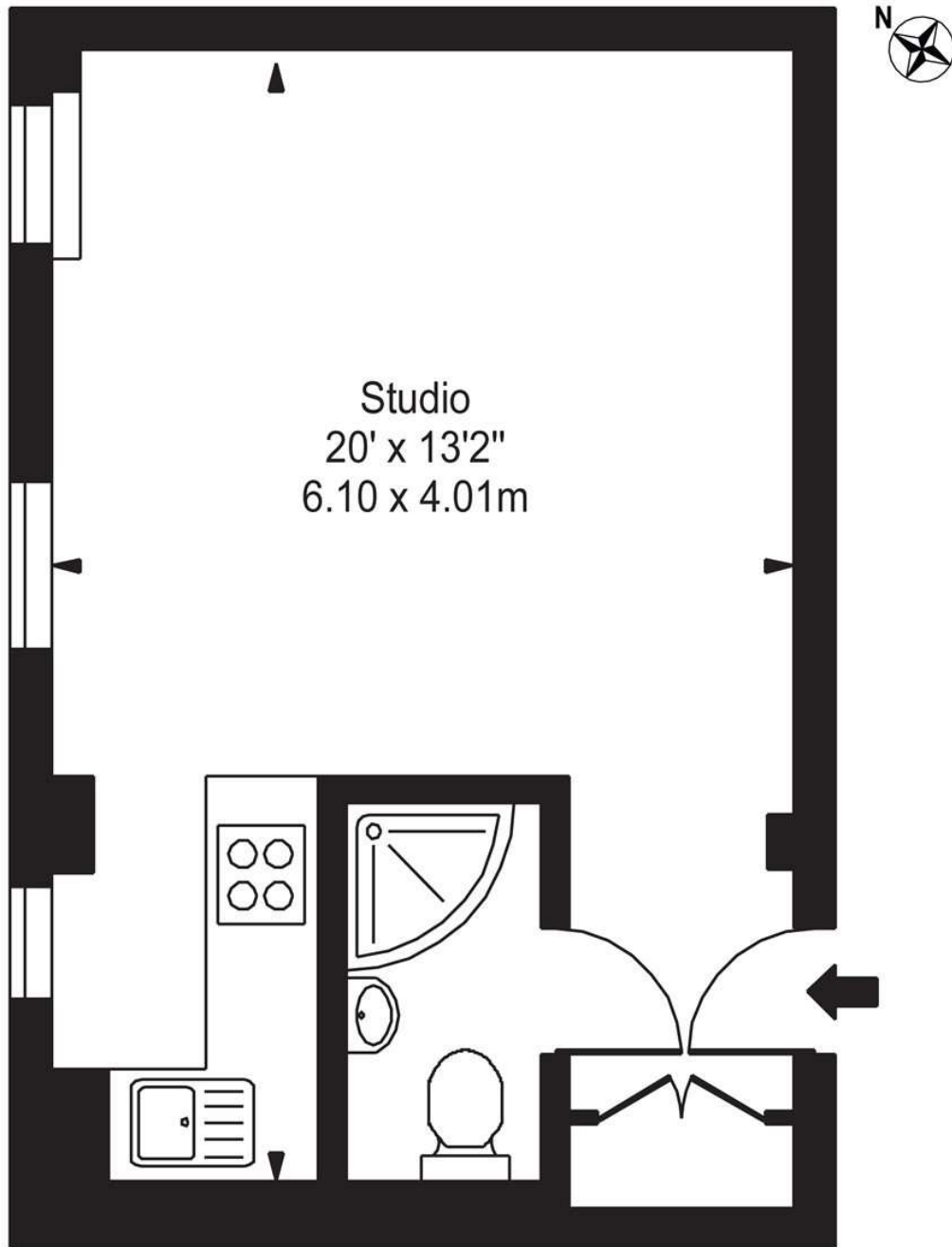
020 7262 2030
sales.hydepark@bhhs-london.com



FLOORPLAN

Park West Place

Approx. Gross Internal Area 270 Sq Ft - 25.08 Sq M



Eighth Floor

For Illustration Purposes Only - Not To Scale

This floor plan should be used as a general outline for guidance only and does not constitute in whole or in part an offer or contract. Any intending purchaser or lessee should satisfy themselves by inspection, searches, enquiries and full survey as to the correctness of each statement. Any areas, measurements or distances quoted are approximate and should not be used to value a property or be the basis of any sale or let.