



# Hyde Park Gardens

Hyde Park Estate, W2 2LU

£740 per week

**BERKSHIRE  
HATHAWAY**  
HOMESERVICES

LONDON

## PROPERTY DETAILS

<b>Guide Price</b>	<b>Square Footage</b>
£740 per week	915

<b>Council Tax</b>	<b>EPC</b>
G	D

A spacious two bedroom, two bathroom apartment situated within a striking white stucco building directly opposite Hyde Park and with exclusive access to stunning communal gardens and with a porter on site. The property is in excellent condition throughout. It boasts two well sized double bedrooms with ensuite bathrooms and ample storage, a large living room which is perfect for entertaining or relaxation, separate modern kitchen and an additional WC. This apartment also further benefits from access to an un-demised patio garden at the front. There is also a small private courtyard with access from one of the bedrooms. This stunning property further benefits from inclusion of gas charges within the rent, a real perk.

Transport links can be found at both Bayswater, Queensway and Marble Arch. District line access is close by at Paddington Station

Hyde Park Gardens is an exclusive address in W2, on the northern edge of Hyde Park. This property includes heating and hot water within the price.

## FEATURES

## Two Bedrooms

## One Reception

## Two Bathrooms

Basement

## Communal Gardens

Concierge/Porter

## Newly Refurbished Throughout

## LOCATION



**HYDE PARK & BAYSWATER LETTINGS**  
24-25 Albion Street, W2 2AX

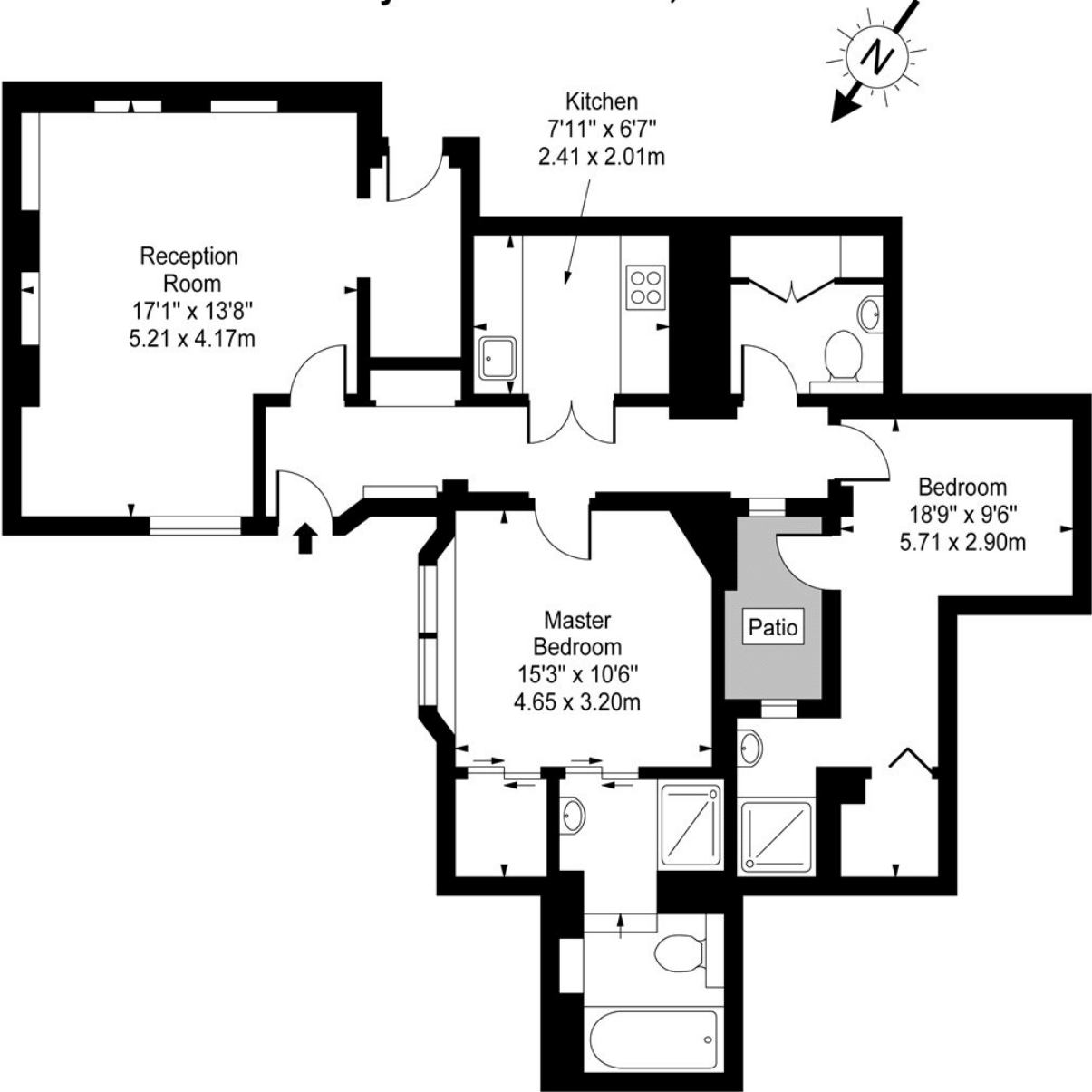
020 7262 2030  
lettings.hydepark@bhhs-london.com





# FLOORPLAN

## Hyde Park Gardens, W2



Lower Ground Floor

Approx Gross Internal Area     **915 Sq Ft - 85.00 Sq M**

For Illustration Purposes Only - Not To Scale  
[www.goldlens.co.uk](http://www.goldlens.co.uk)  
Ref. No. 001917