



A Beautifully Naturally Light Two Bedroom Apartment

GLENTWORTH STREET

REGENTS PARK, NW1

Asking Price
£850,000

**BERKSHIRE
HATHAWAY**
HOMESERVICES

LONDON

PROPERTY DETAILS

Guide Price £850,000	Square Footage 745
Council Tax Band F	EPC E
Ground Rent To Be Confirmed	Service Charge To Be Confirmed
Tenure Leasehold	

A bright and contemporary two bedroom flat on the fifth floor (with lift) of this popular portered mansion block. The property benefits from an eat in kitchen, reception room with wood flooring, two double bedrooms and a bathroom. It is ideally located moments from Baker Street Underground Station and Regents Park. Furnished or Unfurnished. Available now.

FEATURES

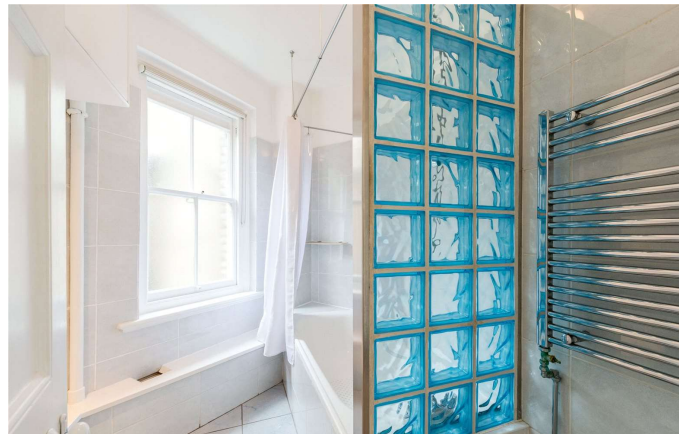
- Two Bedrooms
- One Reception Room
- One Bathrooms
- Lift
- Upper Floor

LOCATION



MARYLEBONE SALES
20A Paddington Street, W1U 5QP

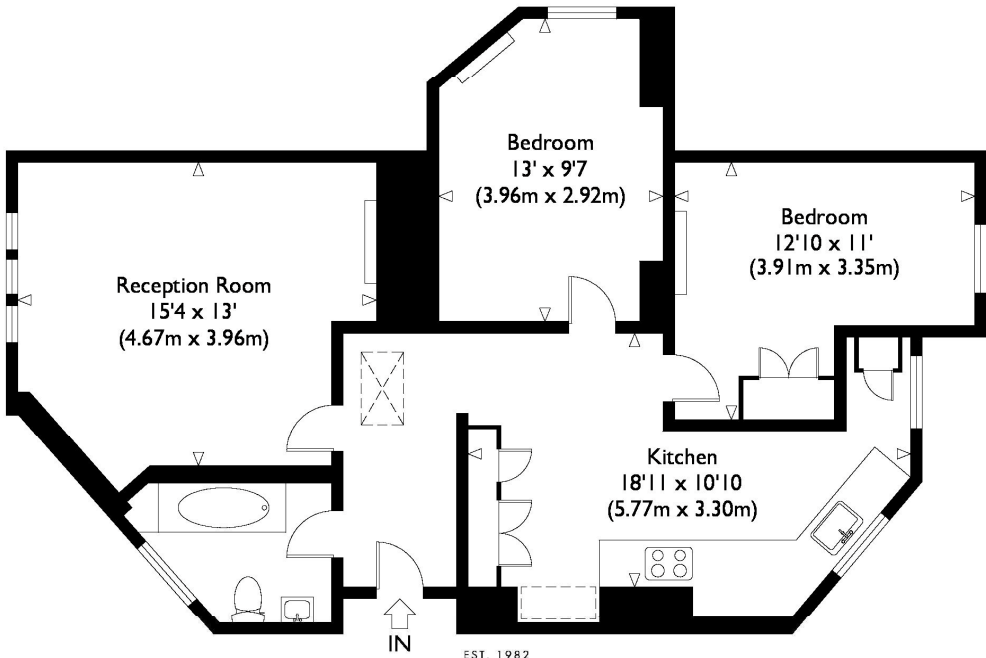
020 7486 6338
sales.marylebone@bhhs-london.com



FLOORPLAN

Clarence Gate Gardens, NW1

Approximate Gross Internal Floor Area : 740 sq ft / 68.7 sq m (Excluding Restricted Height Area)
Approximate Gross Internal Floor Area : 745 sq ft / 69.2 sq m (Including Restricted Height Area)



Fifth Floor

EST. 1982

**BERKSHIRE
HATHAWAY** | LONDON
HOMESERVICES

Illustration for identification purposes only, measurements are approximate, not to scale.