



A Modern Studio Apartment Close to Baker
Street in the Heart of Marylebone

GLOUCESTER PLACE

MARYLEBONE, W1U

£375 per week

**BERKSHIRE
HATHAWAY**
HOMESERVICES

LONDON

PROPERTY DETAILS

Guide Price £375 per week	Square Footage 249
Council Tax Band G	EPC Rating D

A bright and modern studio apartment found within a period conversion.

The property benefits from having been recently renovated and boasts excellent built in storage, a separate kitchen and a contemporary bathroom.

Located on Gloucester Place, this fantastic apartment benefits from being moments from Baker Street and the many local eateries and coffee shops it has to offer. Transport access can also be found at Baker Street and Marylebone Station.

FEATURES

- One Bedroom
- One Reception
- One Bathroom
- Furnished
- Basement
- Modern
- Built In Storage

LOCATION

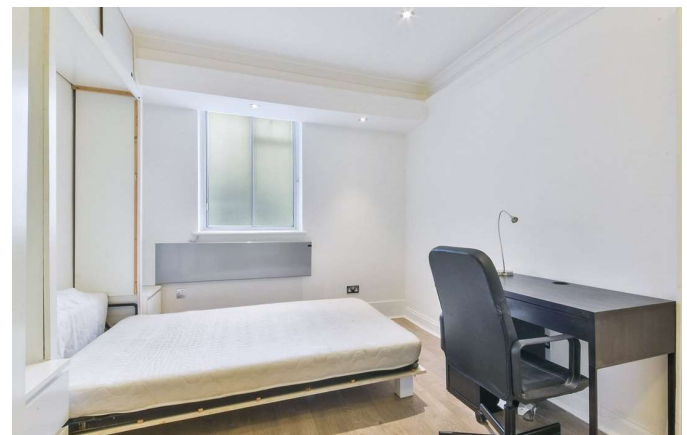


MARYLEBONE LETTINGS

20A Paddington Street, W1U 5QP

020 7486 6338

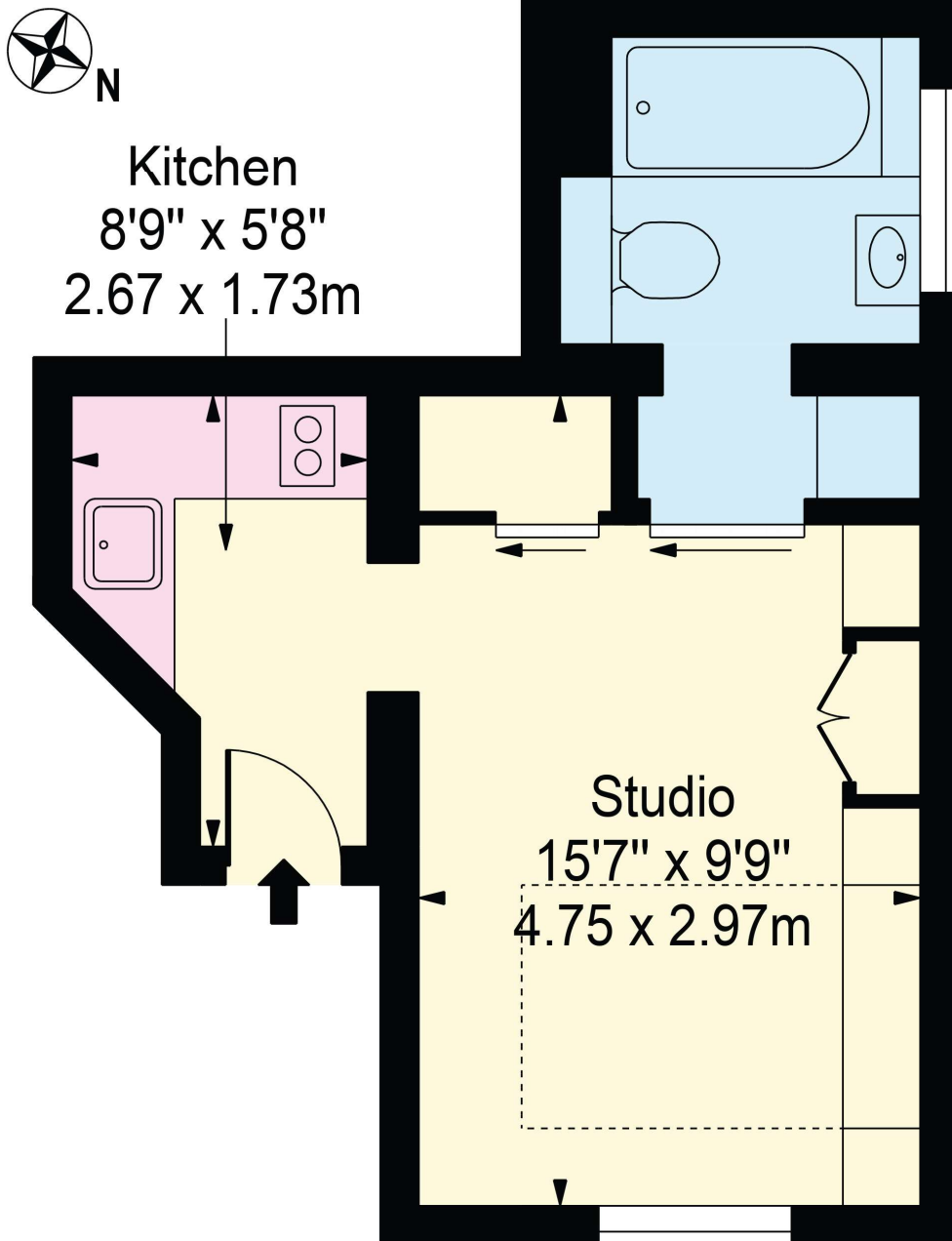
lettings.marylebone@bhhs-london.com



FLOORPLAN

Gloucester Place

Approx. Gross Internal Area 249 Sq Ft - 23.13 Sq M



Lower Ground Floor

For Illustration Purposes Only - Not To Scale

This floor plan should be used as a general outline for guidance only and does not constitute in whole or in part an offer or contract.
Any intending purchaser or lessee should satisfy themselves by inspection, searches, enquiries and full survey as to the correctness of each statement.
Any areas, measurements or distances quoted are approximate and should not be used to value a property or be the basis of any sale or let.

Copyright Morriarti Photography & Design LTD