



One Bedroom Apartment with Hot Water and Heating  
Included in the Rent

# WESTBOURNE TERRACE

BAYSWATER, W2

£600 per week

**BERKSHIRE  
HATHAWAY**  
HOMESERVICES

LONDON

# PROPERTY DETAILS

|                                     |                              |  |
|-------------------------------------|------------------------------|--|
| <b>Guide Price</b><br>£600 per week | <b>Square Footage</b><br>638 | <p>A charming one double bedroom apartment located moments away from the fashionable Connaught Village. The property benefits from wooden flooring throughout, superb high ceilings, large separate kitchen and private balcony overlooking Westbourne Terrace. The apartment is just a short walk from Lancaster Gate and Paddington Mainline Station. Rent inclusive of Hot water and Heating.</p> |
| <b>Council Tax Band</b>             | <b>EPC Rating</b><br>C       |  |

# FEATURES

- One Bedroom
- One Reception Room
- One Bathroom
- High Ceilings
- First Floor
- Balcony

# LOCATION



**HYDE PARK LETTINGS**  
24-25 Albion Street, W2 2AX

020 7262 2030  
lettings.hydepark@bhhs-london.com

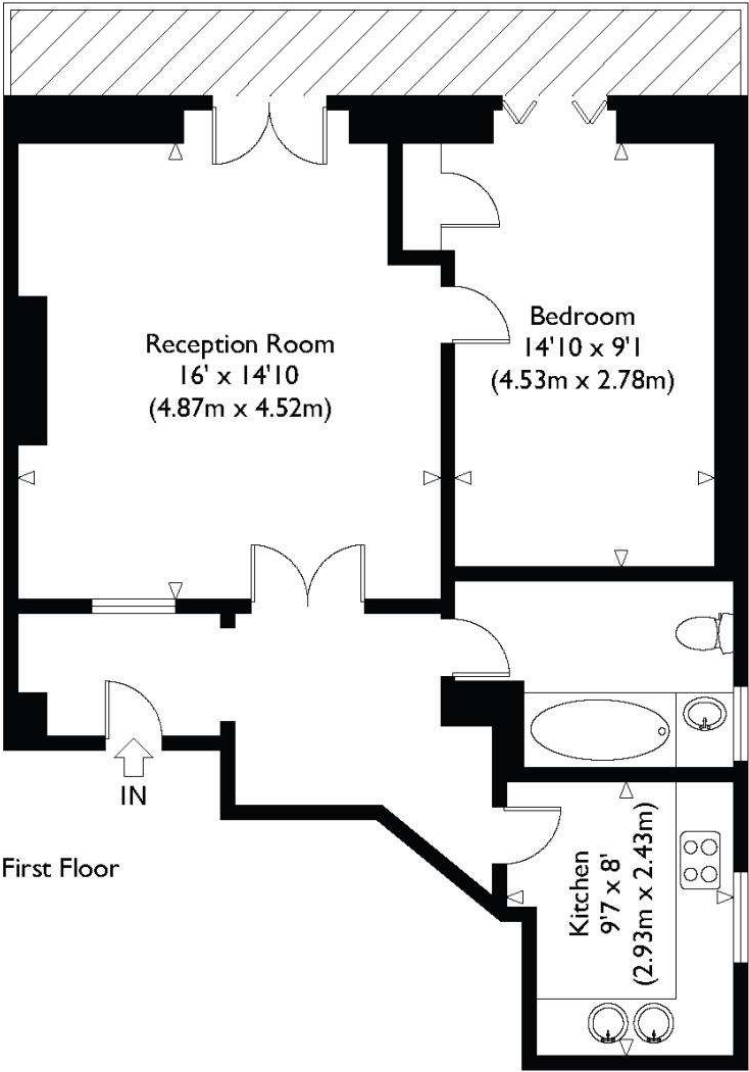
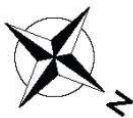




# FLOORPLAN

## Westbourne Terrace, W2

Approximate Gross Internal Floor Area : 638 sq ft / 59.3 sq m



EST. 1982

**KAY & CO**  
LONDON

Illustration for identification purposes only, measurements are approximate, not to scale.