



A Stunning Three Bedroom Apartment in
Popular Portered Mansion Block

CHILTERN STREET

MARYLEBONE, W1U

£1,575 per week

**BERKSHIRE
HATHAWAY**
HOMESERVICES

LONDON

PROPERTY DETAILS

Guide Price £1,575 per week	Square Footage 1,206
Council Tax Band G	EPC Rating To Be Confirmed

A stunning lateral flat located on the upper floor within this popular portered mansion block.

Portman Mansions is an impressive red-brick Victorian Mansion building in the heart of Marylebone. The Mansions benefit from a 24 hour porter service, lift access and secure entry as well as access to a resident's gym & sauna in an adjacent block.

Located in the heart of Marylebone, perfectly situated on the ever-popular Chiltern Street, close to the famous shops and cafes of Marylebone High Street, the bright lights of the West End and the green open spaces of Regents Park. Excellent transport links are close by including Baker Street Station (Jubilee, Metropolitan, Hammersmith and City, Bakerloo, and Circle Lines) as well as multiple bus routes to Oxford Street and Park Lane.

FEATURES

Three Bedrooms
One Reception Room
Two Bathrooms
Concierge/Porter
Upper Floor
Lift
Period

LOCATION

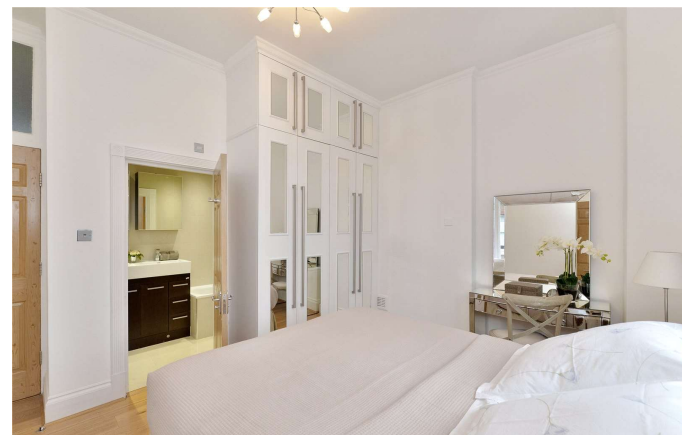
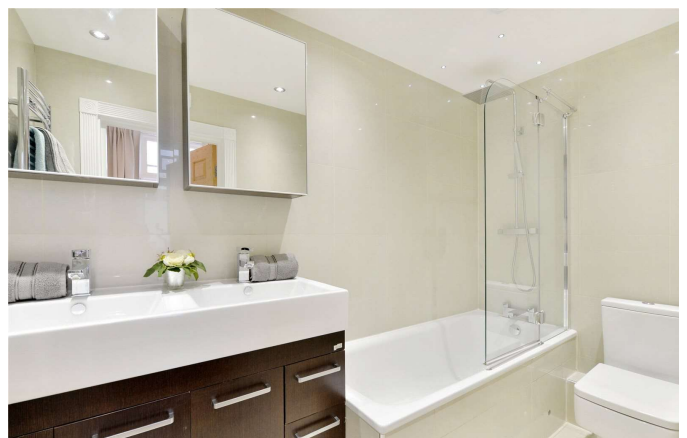


MARYLEBONE LETTINGS

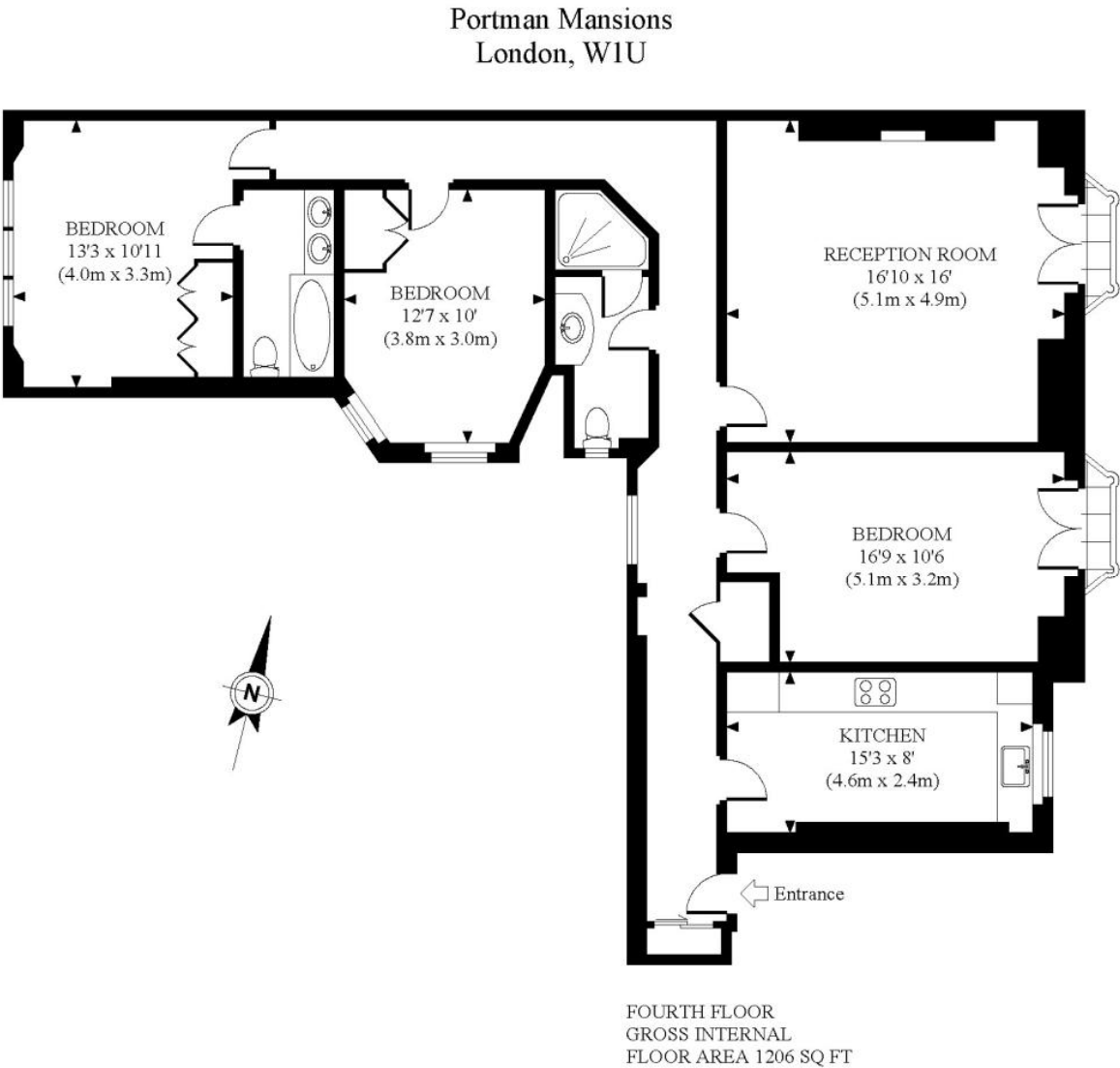
20A Paddington Street, W1U 5QP

020 7486 6338

lettings.marylebone@bhhs-london.com



FLOORPLAN



APPROX. GROSS INTERNAL FLOOR AREA 1206 SQ FT / 112 SQ M