



A One Bedroom Flat in a Popular Portered Block

# OLD MARYLEBONE ROAD

£625 per week

**BERKSHIRE  
HATHAWAY**  
HOMESERVICES

LONDON

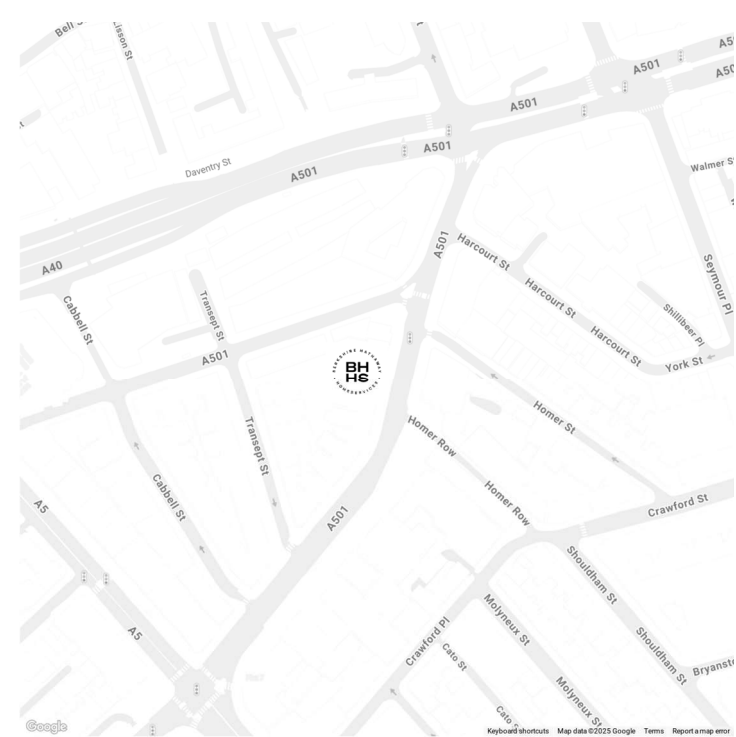
# PROPERTY DETAILS

<b>Guide Price</b> £625 per week	<b>Square Footage</b> 506	<p>A one bedroom flat on the third floor (with a lift) of a well maintained apartment block close to the Heart of Marylebone.</p> <p>This beautiful property comprises a spacious reception room, a separate modern kitchen, a bathroom, a double bedroom with ample wardrobe space, and a balcony. Benefiting from wooden floors throughout.</p> <p>Heating and the heating of hot water included in the rent.</p> <p>It is ideally located moments from Marylebone Mainline Station and Edgware Road Underground Station.</p>
<b>Council Tax Band</b> C	<b>EPC Rating</b> C	

# FEATURES

One Bedroom
One Reception Room
One Bathroom
Furnished
Upper Floor
Balcony
Period

# LOCATION



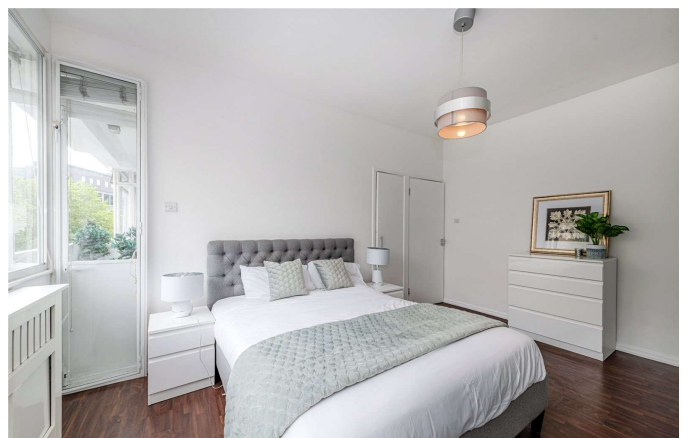
## MARYLEBONE LETTINGS

20A Paddington Street, W1U 5QP

020 7486 6338

lettings.marylebone@bhhs-london.com

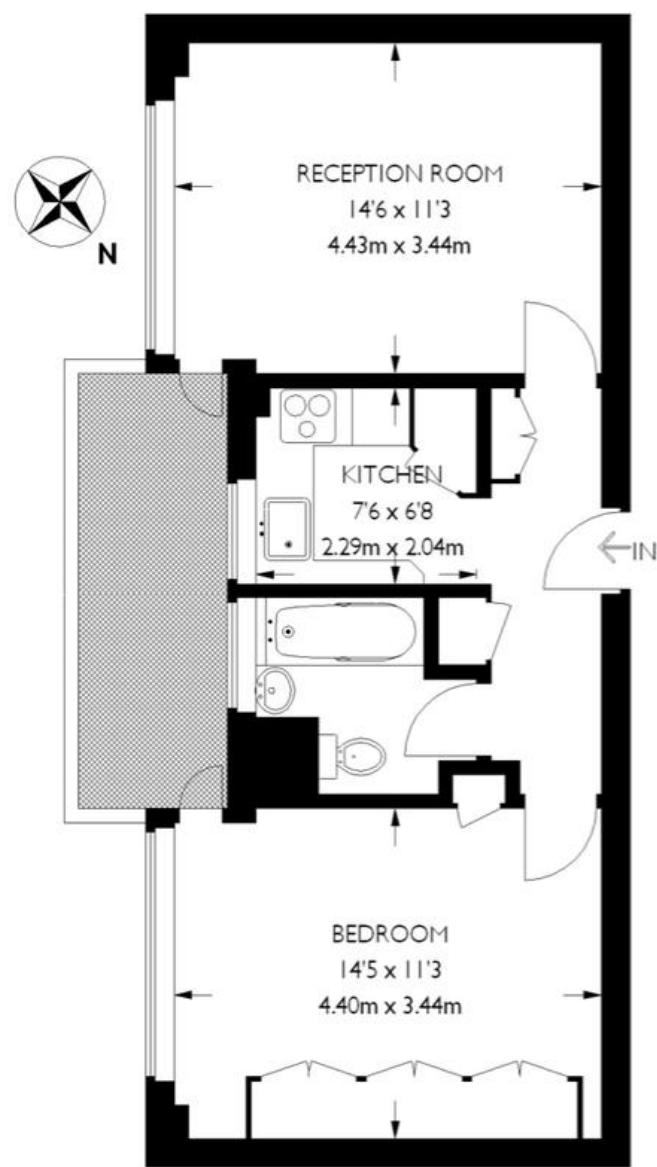




# FLOORPLAN

## Old Marylebone Road, NW1

Approximate Gross Internal Area :- 506 sq ft / 47 sq m



Third Floor

EST. 1982

**KAY & CO**  
LONDON

Illustration for identification purposes only,  
measurements are approximate, not to scale.