



Contemporary Apartments to Rent in this  
Popular Portered Block

# WEYMOUTH STREET

MARYLEBONE, W1W

£1,200 per week

**BERKSHIRE  
HATHAWAY**  
HOMESERVICES

LONDON

# PROPERTY DETAILS

<b>Guide Price</b> £1,200 per week	<b>Square Footage</b> 700
<b>Council Tax Band</b> TBA	<b>EPC Rating</b> C

A large modern two bedroom apartment on an upper floor of this popular portered block.

Comprising an open plan kitchen reception room which leads out to a private balcony, with a two double bedrooms, two bathrooms and all impeccably well presented.

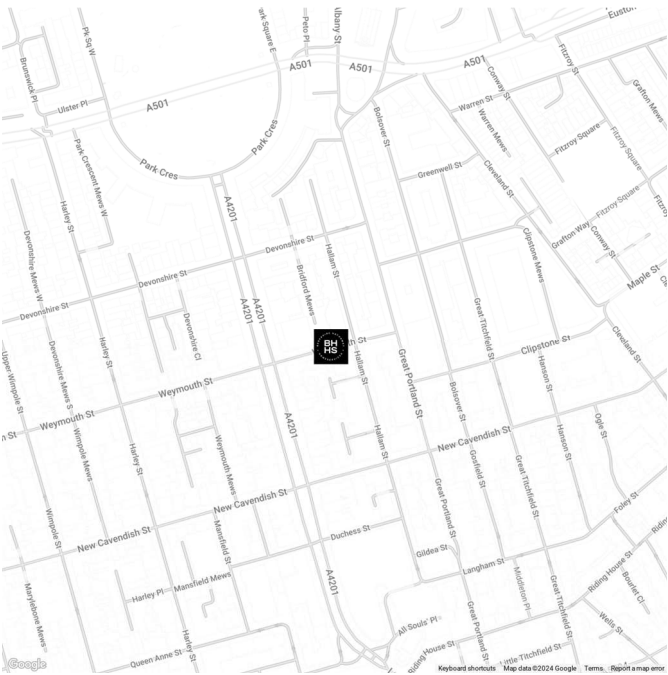
The property further benefits from 24 Hour Security, and Concierge.

Weymouth Street is situated between Marylebone and Fitzrovia, ideally located for the shops and amenities of Oxford Street.

## FEATURES

Two Bedroom
One Reception
Two Bathroom
Concierge/Porter
Lift
Upper Floor
24 Hour Security
Balcony

## LOCATION

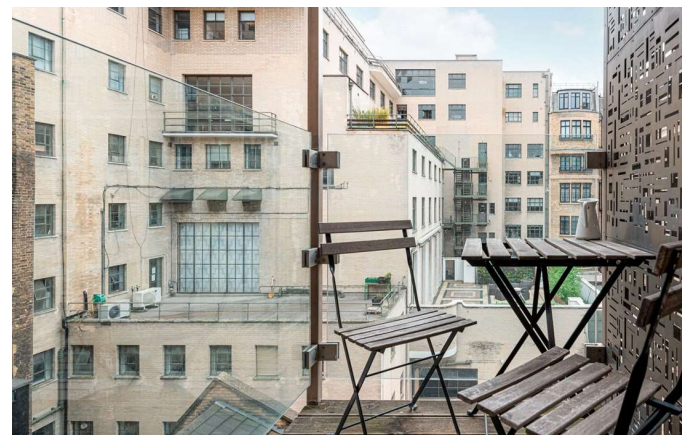


### MARYLEBONE LETTINGS

20A Paddington Street, W1U 5QP

020 7486 6338

lettings.marylebone@bhhs-london.com

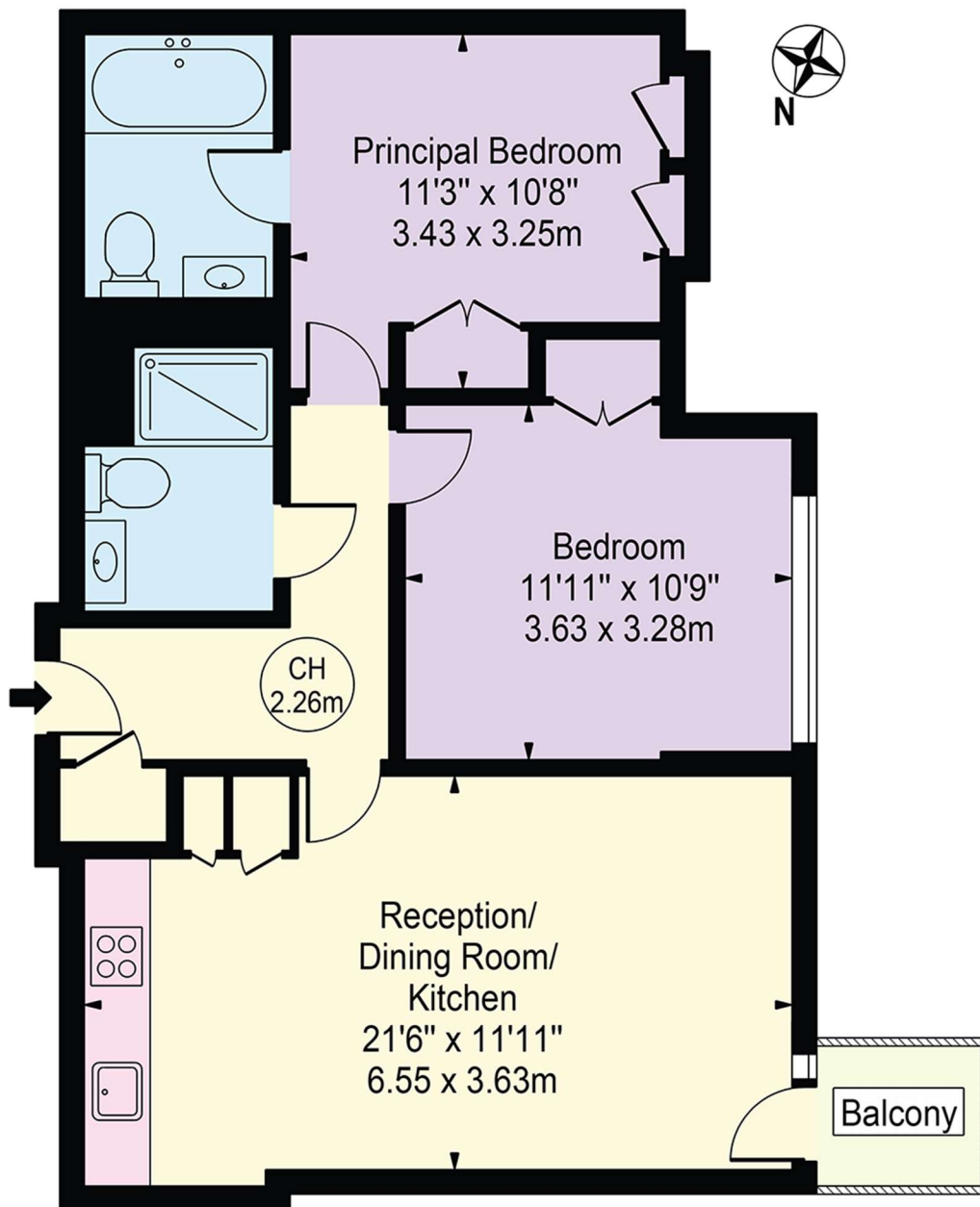




# FLOORPLAN

## Weymouth Street

Approx. Gross Internal Area 700 Sq Ft - 65.03 Sq M  
Approx. External Area Of Balcony 21 Sq Ft - 1.95 Sq M



## Fourth Floor

For Illustration Purposes Only - Not To Scale

This floor plan should be used as a general outline for guidance only and does not constitute in whole or in part an offer or contract.  
Any intending purchaser or lessee should satisfy themselves by inspection, searches, enquiries and full survey as to the correctness of each statement.  
Any areas, measurements or distances quoted are approximate and should not be used to value a property or be the basis of any sale or let.

Copyright Morriarti Photography & Design LTD