



An Impressively Spacious Two Bedroom Apartment
Located on a Garden Square

GLOUCESTER SQUARE

HYDE PARK, W2

Asking Price
£1,450,000

**BERKSHIRE
HATHAWAY**
HOMESERVICES

LONDON

PROPERTY DETAILS

Guide Price £1,450,000	Square Footage 1,130
Council Tax Band F	EPC D
Service Charge £5,068 pa	Tenure Share of Freehold 956 years remaining

This beautifully presented two double bedroom apartment benefits from spacious rooms throughout with impressive 3m high ceilings and a smart open plan kitchen. With two en suite bathrooms and an attractive private patio, the property also benefits from access to a wonderful communal garden.

Gloucester Square is conveniently located for access to Hyde Park and is surrounded by excellent transport amenities including Paddington Main Line Station, Paddington Circle and district line station, The Elizabeth Line and the Central Line at Lancaster Gate. The boutique shops and cafes of Connaught Village are also close at hand.

FEATURES

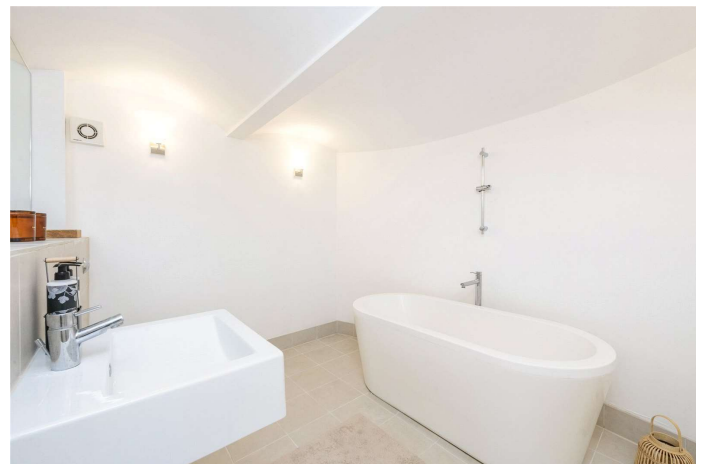
- Two Bedrooms
- One Reception Room
- Two Bathrooms
- Communal Gardens
- Patio

LOCATION



HYDE PARK SALES
24-25 Albion Street, W2 2AX

020 7262 2030
sales.hydepark@bhhs-london.com

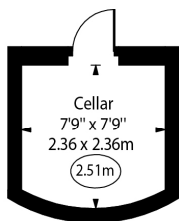


FLOORPLAN

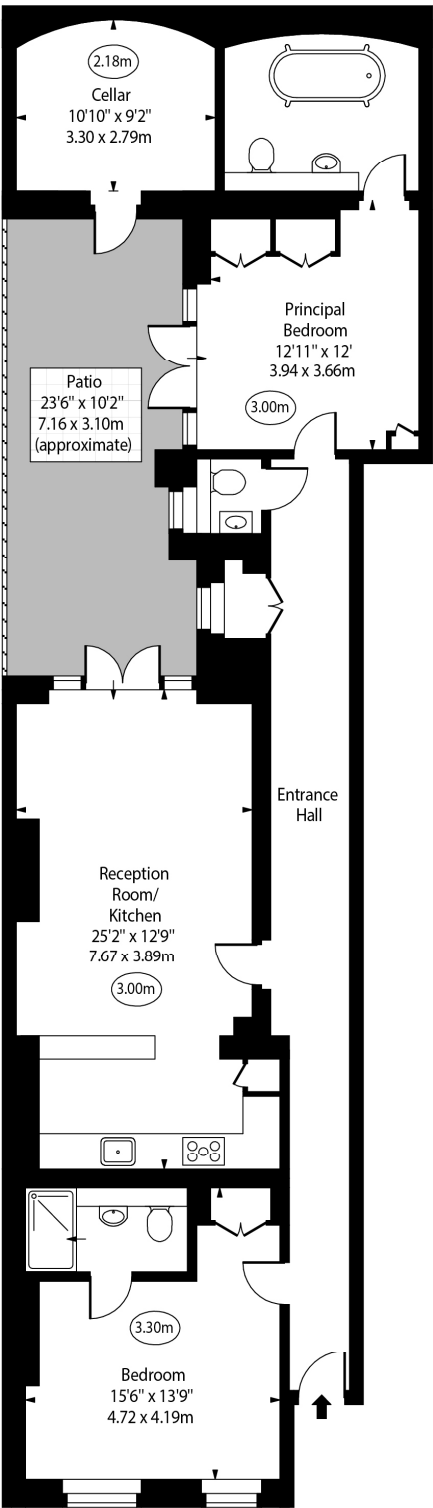
Gloucester Square,
Hyde Park, W2



○ - Ceiling Height



Lower Ground Floor



Lower Ground Floor

Approx Gross Internal Area 1178 Sq Ft - 109.44 Sq M
(Excluding Separate Cellar)

Separate Cellar Area 60 Sq Ft - 5.57 Sq M

For Illustration Purposes Only - Not To Scale
www.goldlens.co.uk
Ref. No. 021060E