



Modern Three Bedroom Apartment in a Sought
After Portered Block

WEYMOUTH STREET

MARYLEBONE, W1W

£2,400 per week

**BERKSHIRE
HATHAWAY**
HOMESERVICES

LONDON

PROPERTY DETAILS

Guide Price £2,400 per week	Square Footage 1175
Council Tax Band G	EPC Rating C

A stunning three bedroom lateral apartment on the first floor (with lift) of this popular portered block.

The property features wooden floors throughout and comprises an open-plan kitchen/reception room, a master bedroom with en-suite bathroom, two further double bedrooms and two further bathrooms.

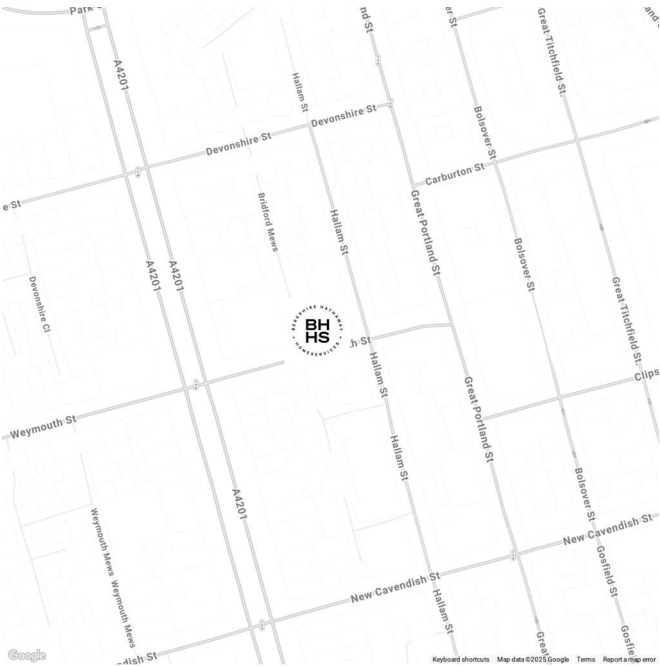
Further benefits include air conditioning, 24-hour security, and concierge.

Weymouth Street is nestled between Marylebone and Fitzrovia, ideally located for the shops and amenities of Oxford Street and greenspaces of Regents Park.

FEATURES

Three Bedrooms
One Reception Room
Three Bathrooms
Concierge/Porter
First Floor
24-Hour Security
Lift
Furnished

LOCATION

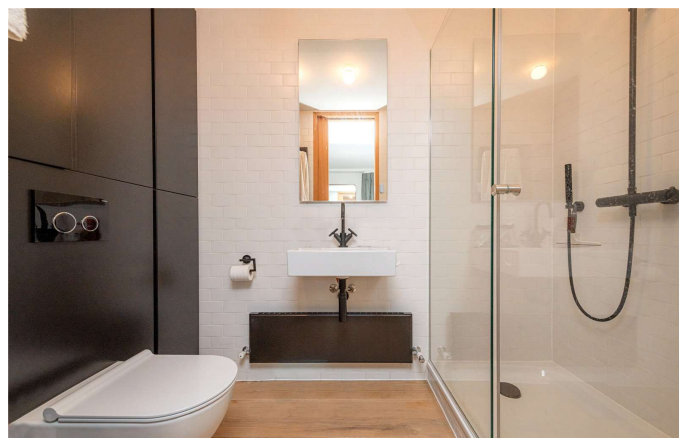


MARYLEBONE LETTINGS

20A Paddington Street, W1U 5QP

020 7486 6338

lettings.marylebone@bhhs-london.com

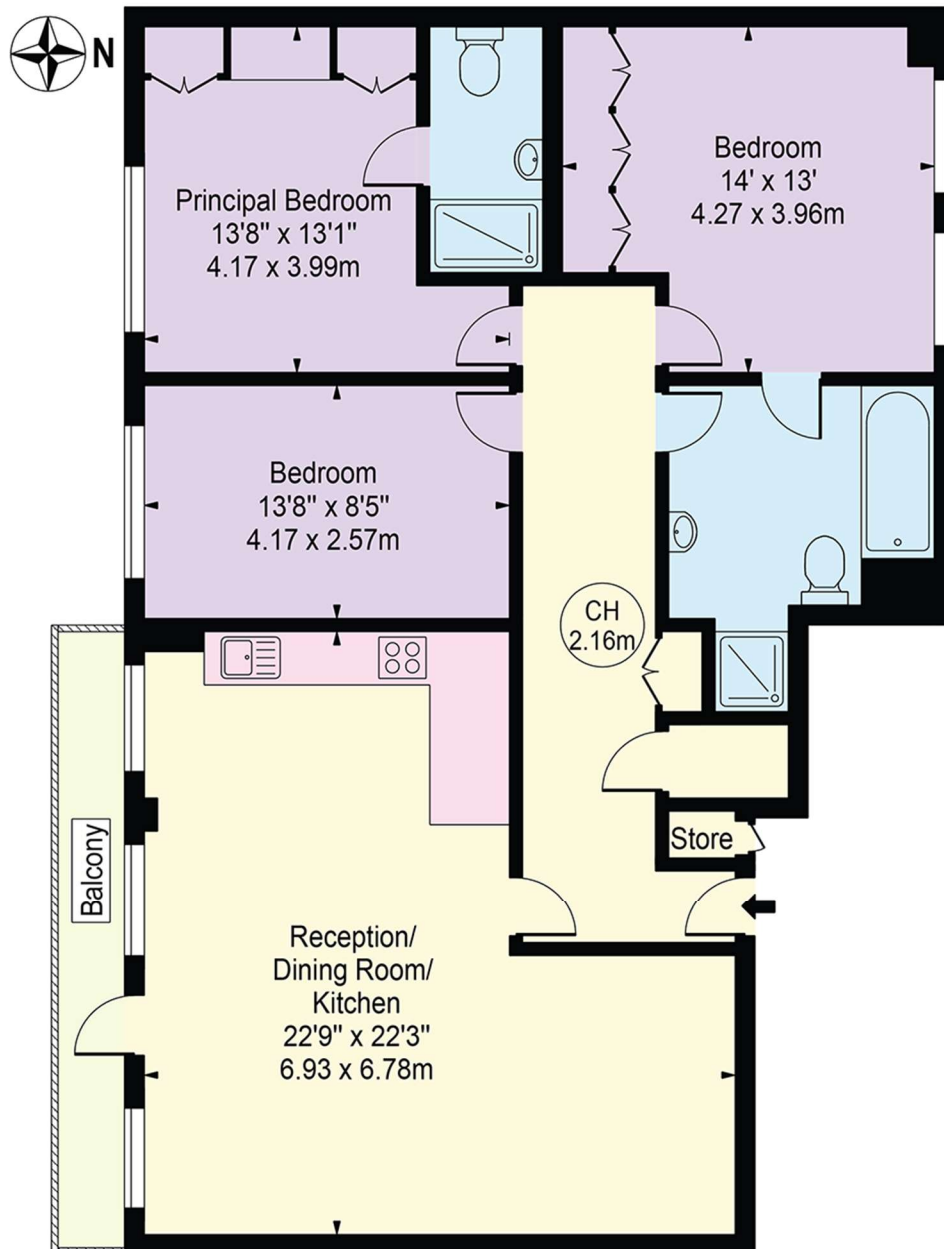


FLOORPLAN

Weymouth Street

Approx. Gross Internal Area 1175 Sq Ft - 109.16 Sq M
(Excluding Store)

Approx. External Area Of Balcony 58 Sq Ft - 5.39 Sq M



First Floor

For Illustration Purposes Only - Not To Scale

This floor plan should be used as a general outline for guidance only and does not constitute in whole or in part an offer or contract. Any intending purchaser or lessee should satisfy themselves by inspection, searches, enquiries and full survey as to the correctness of each statement. Any areas, measurements or distances quoted are approximate and should not be used to value a property or be the basis of any sale or let.

Copyright Morriarti Photography & Design LTD